

Jessie M. Honeyman Memorial State Park

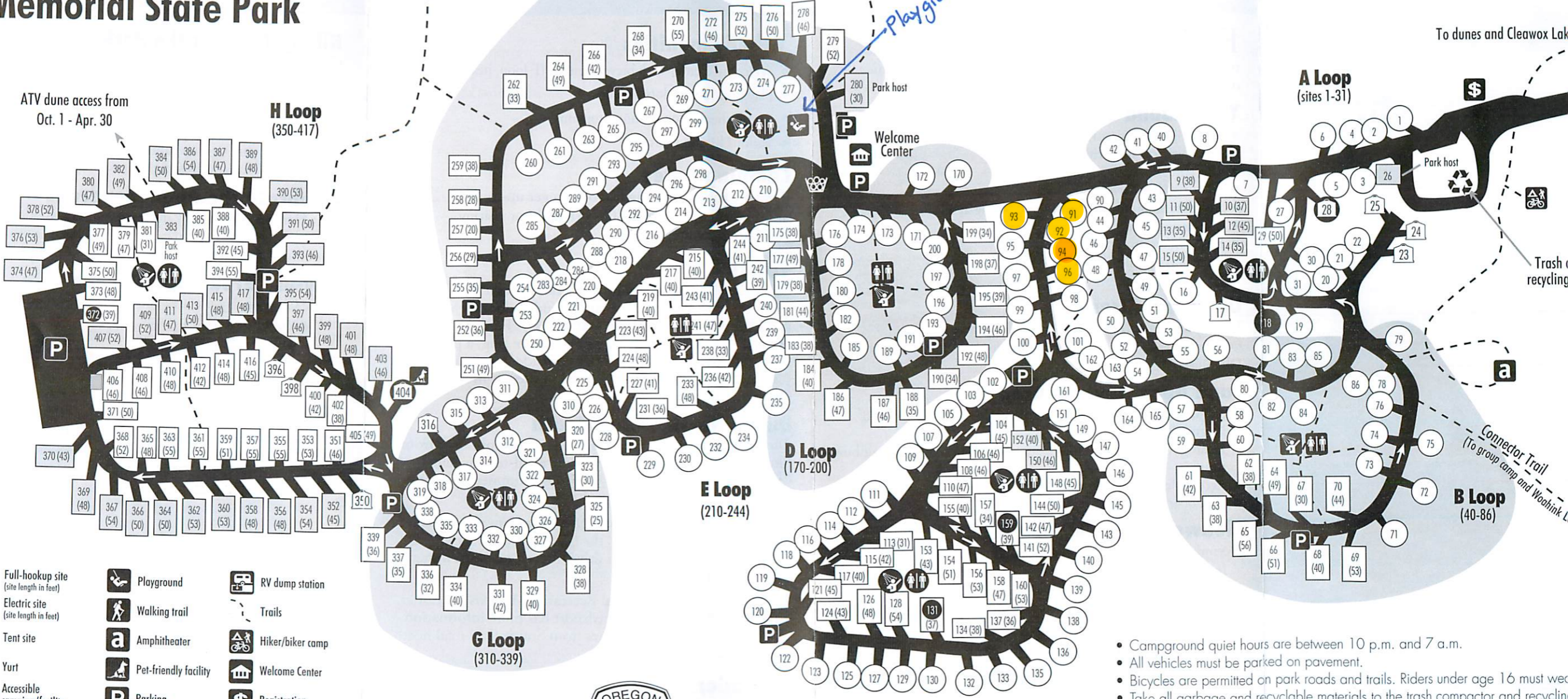
To dunes
(no trails to ocean beach)

To dunes



To dunes and Clewax Lake

ATV dune access from
Oct. 1 - Apr. 30



- Full-hookup site (site length in feet)
- Electric site (site length in feet)
- Tent site
- Yurt
- Accessible camping/facility
- Shower
- Restroom
- Playground
- Walking trail
- Amphitheater
- Pet-friendly facility
- Parking
- Firewood
- Recycling center
- RV dump station
- Trails
- Hiker/biker camp
- Welcome Center
- Registration booth



- Campground quiet hours are between 10 p.m. and 7 a.m.
 - All vehicles must be parked on pavement.
 - Bicycles are permitted on park roads and trails. Riders under age 16 must wear helmets.
 - Take all garbage and recyclable materials to the trash compactor and recycling center. Do not leave garbage in restroom trash cans or at your campsite.
 - Pets must be physically restrained at all times when not confined in a vehicle or trailer. Leashes must be no longer than six feet. All waste must be properly removed. (See our brochure for details.)
 - **Play it safe on the beach!** Stay off logs, know the tide schedule, and don't turn your back on the ocean.
- Check-in** after 4 p.m., **Check-out** by 1 p.m.

All information or fees subject to change without notice. This brochure is available in alternative formats upon request. Call 1-800-551-6949. Oregon Relay for the hearing impaired: dial 711.